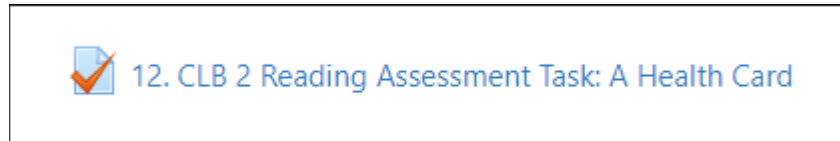


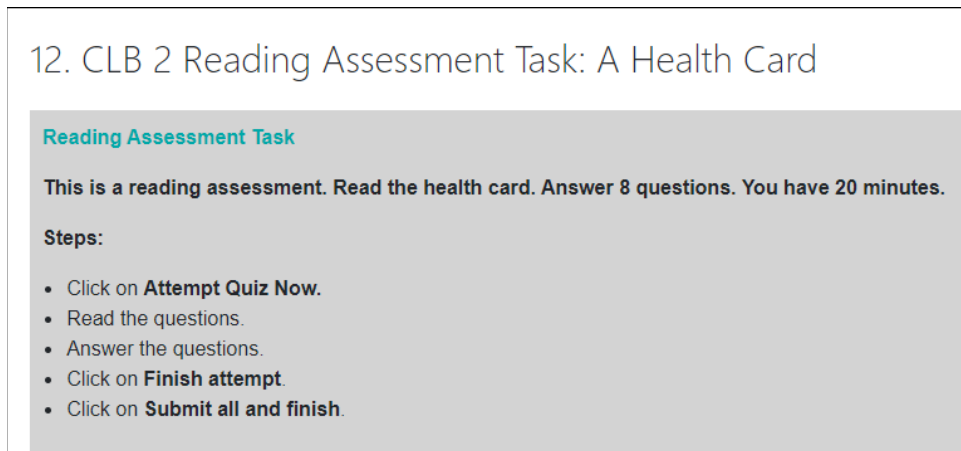
Quiz

The **Quiz** is a test to practice what you learn. There are different types of questions. Read the questions and submit your answers.

1. Click on a **Quiz** activity in your course.



2. Read the instructions.

A screenshot of the quiz instructions page. The title is "12. CLB 2 Reading Assessment Task: A Health Card". Below the title is a section labeled "Reading Assessment Task" with the text: "This is a reading assessment. Read the health card. Answer 8 questions. You have 20 minutes." Underneath, there is a "Steps:" section with a bulleted list: "Click on **Attempt Quiz Now**.", "Read the questions.", "Answer the questions.", "Click on **Finish attempt**.", and "Click on **Submit all and finish**."/>

12. CLB 2 Reading Assessment Task: A Health Card

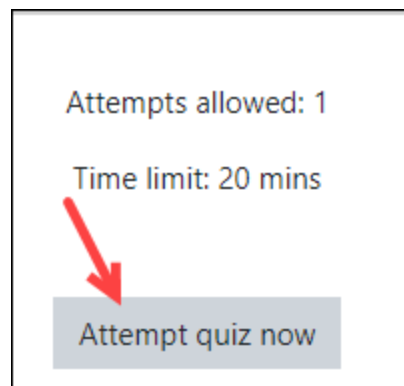
Reading Assessment Task

This is a reading assessment. Read the health card. Answer 8 questions. You have 20 minutes.

Steps:

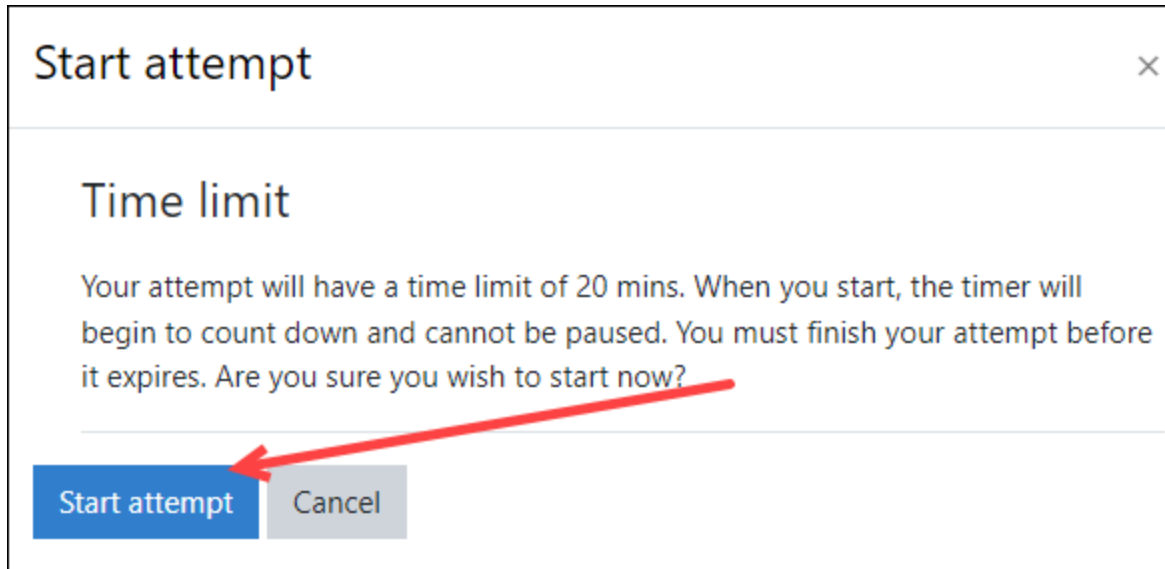
- Click on **Attempt Quiz Now**.
- Read the questions.
- Answer the questions.
- Click on **Finish attempt**.
- Click on **Submit all and finish**.

3. Click on the **Attempt Quiz Now** button.

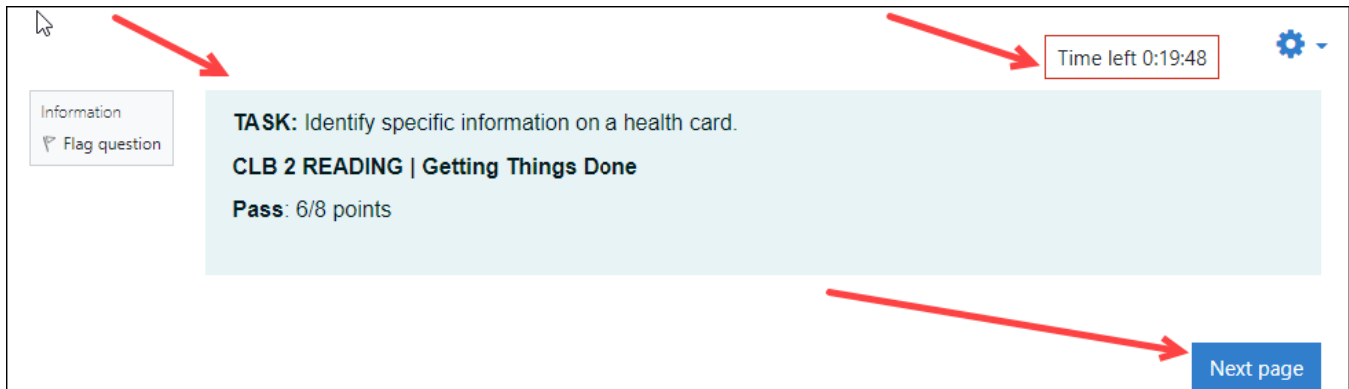


Information about the time limit shows.

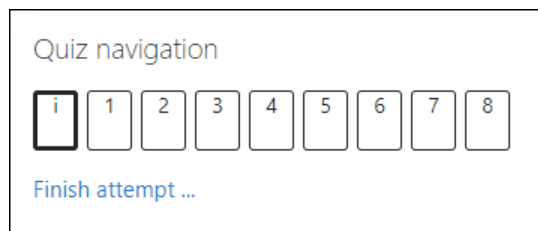
4. Click the **Start attempt** button.



5. Check the timer. Read the information. Click on the **Next page** button.



You can see the number of questions here:



The first question shows. Read the question.

6. Choose your answer. Click on the **Next page** button.

Question 1
Not yet answered
Marked out of 1.00
Flag question

Look at the health card. What is circled?

Health • Santé
Jennifer Marie Costes
8283 - 484 - 043 - VL
BORN 1983 - 11 - 27
ISS 2015 - 12 - 23 EXP 2020 - 11 - 27

Select one:

health card number
 expiry date
 date of birth

Previous page Next page

Question 1 is now over. You are on question 2.

Quiz navigation

i 1 2 3 4 5 6 7 8

Finish attempt ...

Follow the question numbers until they are finished.

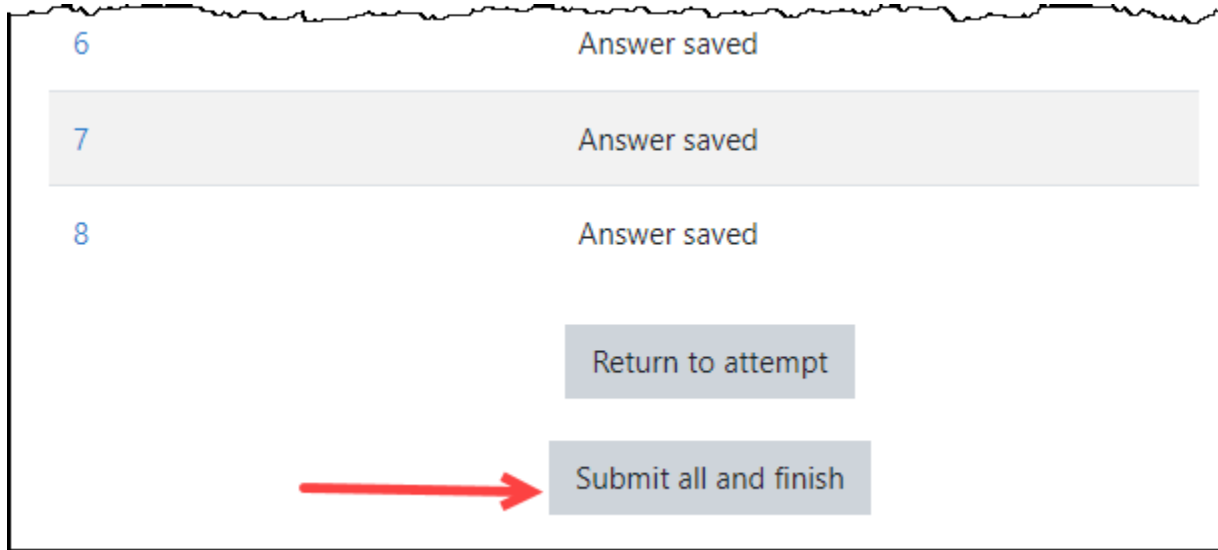
7. Click on the **Finish attempt ...** link.

Quiz navigation

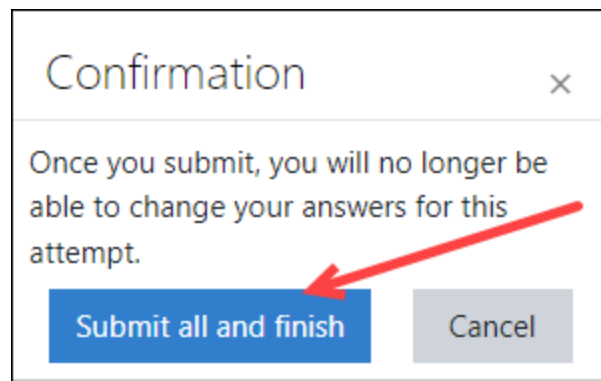
i 1 2 3 4 5 6 7 8

Finish attempt ...

8. Click the **Submit all and finish** button.



9. Click on the **Submit all and finish** button again.



Your grade will appear.

Started on	Tuesday, 8 November 2022, 1:26 PM
State	Finished
Completed on	Tuesday, 8 November 2022, 1:31 PM
Time taken	5 mins 20 secs
Grade	8.00 out of 8.00 (100%)

10. Click on the **Breadcrumb Menu** at the top of your course to return to your learning.

[Dashboard](#) / [ESL eUnits](#) / [UNIT: Communicate About a Doctor's Appointment \(CLB 1-2\)](#) / [12. CLB 2 Reading Assessment Task: A Health Card](#)